

PRODUCTION TOOLING SOLUTION

Email: tooling@solderconnection.co.uk

Telephone: +44 (0)1291 624 400



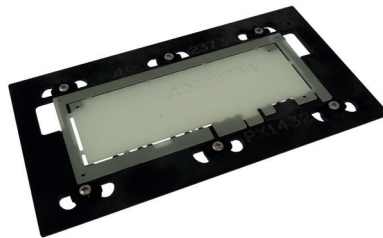
A complete bespoke design and manufacturing solution for all your tooling requirements.

High performance composite materials specifically designed for the PCB assembly process. Designed & manufactured to the highest quality.



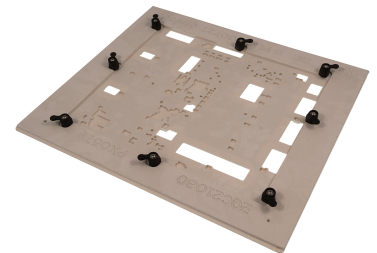
Wave Solder Pallet

Wave Carriers support and protect PCB's during the wave solder process. Allows for increased through-put and the securing & soldering of critical components. Wave Pallets also help prevent board warpage across the solder wave.



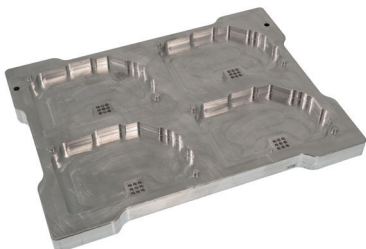
Print Placement Reflow Carrier

Allows thin or oddly shaped printed circuit boards to be supported during the print stage. Recessed wing fixings are then lifted onto the PCB to retain it during placement and reflow. These carriers reduces handling, decreases set-up time & improves soldering quality.



Conformal Coating Carriers

Conformal Coating process tooling and fixtures will offer additional production efficiency and will increase the reliability of your coating process overall, thereby removing the inaccuracies of manual masking techniques and reduce your overall costs.



Press Pin Fixture

Press Pin Fixtures are used to support a PCB and protect bottom-side components, whilst compliant pins are pressed into the board. These effective tooling designs remove the risk of excessive pressure causing damage to the component.



Router Fixtures

Prevent both PCB and potential component damage with our well designed and robustly manufactured router plates. These are available for all common inline & standalone systems. Additionally an option to incorporate lid sensors is available, adding to process control and operator safety.



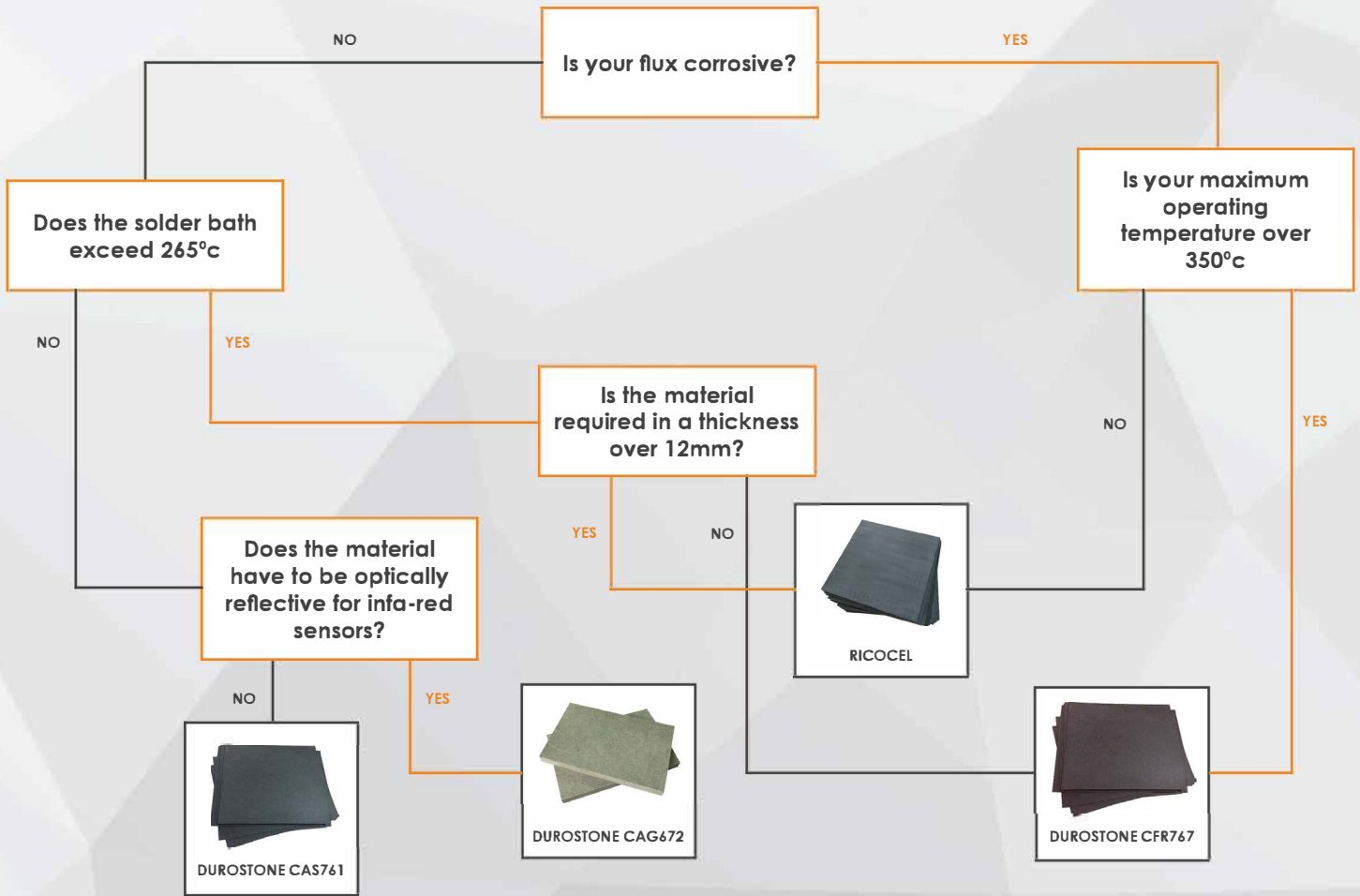
Robotic Tooling

Well designed Robotic tooling and fixtures ensures your automated soldering processes achieve both consistent repeatability and maximum process yield. Our team specialises in quality manufactured bespoke engineering solutions to suit soldering applications across many different platforms.

Please send all enquires to:

tooling@solderconnection.co.uk

Which material should I choose for my tooling?



Technical Data	RIKOCEL ES3261A	DUROSTONE CFR767	DUROSTONE CAS761	DUROSTONE CAG762
Grade	Aggressive Flux Resistant	High Temperature Flux Resistant	Anti-Static	Anti-Static Optical
Density (g/cm ³)	1.95	1.8	1.85	1.85
Water Absorption (%)	0.02	<0.20	<0.20	<0.20
Thermal Conductivity (W/m ² K)	0.38	0.23	0.25	0.25
Coefficient of Linear Expansion (10 ⁻⁶ /K) between 30°C & 200°C	10	11	11	11
Max Operating Temperature (°C) 10-20 seconds	350	380	300	300
Standard Operating Temperature (°C)	300	300	260	260
Surface Resistivity (ohms)	1 x 10 ⁷	10 ⁵ -10 ⁹	10 ⁵ -10 ⁹	10 ⁵ -10 ⁹
Thickness' Available (mm)	3, 4, 5, 6, 8, 10, 12, 14		3, 4, 5, 6, 8, 10, 12	

Designers and Manufacturers of Quality Bespoke Tooling Solutions for the Electronic Industry.

Please send all enquiries to our email address below.

Tel: +44 (0) 1291 624 400

Email: tooling@solderconnection.co.uk

